



# MONTHLY MEMBERSHIP PROGRESS REPORT

District 202 F

Results as of: 06/30/2018

GMT: CLIFFORD HEYWOOD

LOCATION NEW ZEALAND

GMT CA

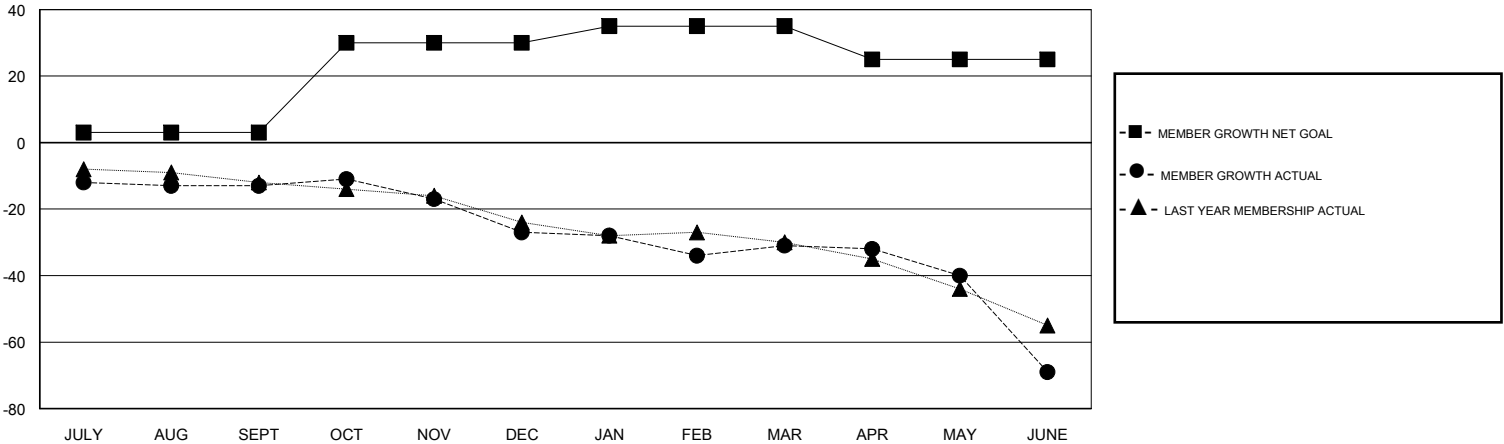
| Clubs                 |               |           |               |
|-----------------------|---------------|-----------|---------------|
| RESULTS FOR 2017-2018 |               |           |               |
| QUARTER               | NEW CLUB GOAL | NEW CLUBS | DROPPED CLUBS |
| JULY/AUG/SEPT         | 0             | 0         | 0             |
| OCT/NOV/DEC           | 1             | 0         | 0             |
| JAN/FEB/MAR           | 0             | 0         | 1             |
| APR/MAY/JUNE          | 0             | 0         | 0             |

| Members               |                        |                      |  |
|-----------------------|------------------------|----------------------|--|
| RESULTS FOR 2017-2018 |                        |                      |  |
| QUARTER               | MEMBER GROWTH NET GOAL | MEMBER GROWTH ACTUAL | DROPPED MEMBERS ACTUAL (including transfers) |
| JULY/AUG/SEPT         | 3                      | 27                   | 34   |
| OCT/NOV/DEC           | 27                     | 32                   | 36   |
| JAN/FEB/MAR           | 5                      | 13                   | 15   |
| APR/MAY/JUNE          | -10                    | 42                   | 67   |

GOALS AND ACTUAL NEW CLUBS CUMULATIVE



GOALS AND ACTUAL MEMBERS CUMULATIVE



|                  |
|------------------|
| DROPPED CLUBS: 1 |
|------------------|

|  |
|--|
| 32 CLUBS OF 48 ADDED 1 OR MORE NEW MEMBERS |
|--|

| GENDER DISTRIBUTION                    |              |
|--|--------------|
| MALE                                   | 894 (65.16%) |
| FEMALE                                 | 478 (34.84%) |
| Women Percentage Fiscal Year Goal: 38% |              |

| DROPPED MEMBERS |            |
|-----------------|------------|
| DECEASED        | 12         |
| CLUB CANCELLED  | 0          |
| OTHER           | 140        |
| <b>TOTAL</b>    | <b>152</b> |

[CLICK HERE FOR CUMULATIVE MEMBERSHIP DATA](#)

|                                 |   |
|---------------------------------|---|
| TOTAL FAMILY UNIT MEMBERS       | 0 |
| FAMILY MEMBERS PAYING HALF DUES | 0 |